

For Concrete Construction

## FLEX-TITE INSULATION CLIPS

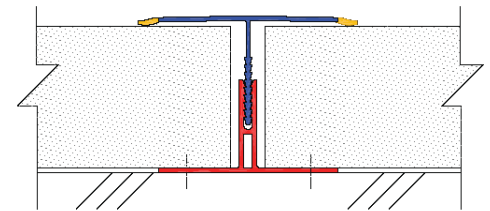
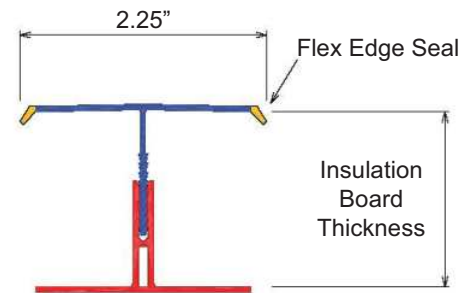
Victory Bear Flex-Tite insulation clips are quick, easy, and efficient to work with. They provide a finishing touch that is attractive as well as functional. They are designed to save labor in installation, and save energy once finished.

### Features & Benefits

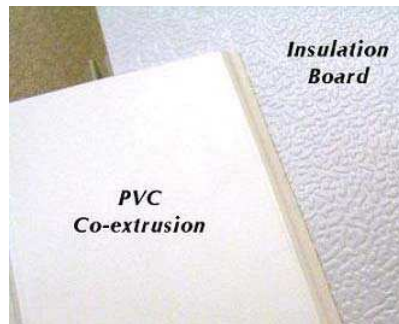
- **Energy Efficient Design** – Our Flex-Tite system seals tightly against the insulation board to **reduce thermal loss** at the seams.
- **Easy Installation** – Flex-Tite clips' two-piece design allows for **easy installation**.
- **Convenient Fastening Area** – All Flex-Tite and Quick Clip systems have a convenient fastening leg for easy access with a nail gun, reducing installation time.
- **Reduce costs with Impact-Resistant PVC** – Our Flex Tite systems are designed to withstand the high impact of nail guns and power saws, **saving you labor costs**.
- **Attractive Finish** – Our Flex-Tite systems are manufactured to an **attractive** white finish and do not require painting. Call for custom color applications.
- **UL Tested** – Class A material, tested by Underwriters Laboratories (UL 723 – test for surface burning characteristics of building materials). Flame spread is 0 and smoke developed equals 190.



Flex-Tite wall installation



Two-piece Flex-Tite system



Fukuvi USA, Inc.  
**Victory Bear Products**  
 7631 Progress Court  
 CenterPoint 70 Commerce Park  
 Huber Heights, OH 45424

[www.fukuvi-usa.com](http://www.fukuvi-usa.com)  
[www.victorybear.com](http://www.victorybear.com)

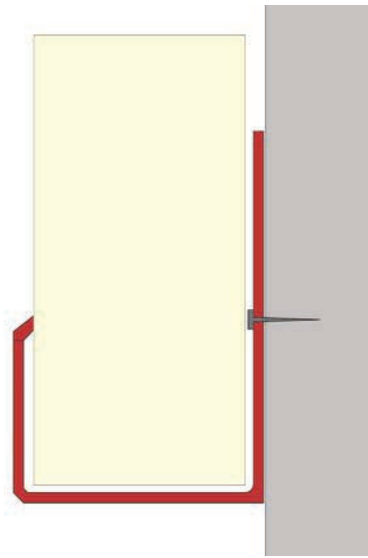


**MADE IN USA**

**Customer Support**  
 (937) 236-7288 ext. 247/231  
[aheskett@fukuvi-usa.com](mailto:aheskett@fukuvi-usa.com)  
[jdresel@fukuvi-usa.com](mailto:jdresel@fukuvi-usa.com)  
 Fax: (937) 236-7289

## FLEX-TITE INSULATION CLIPS

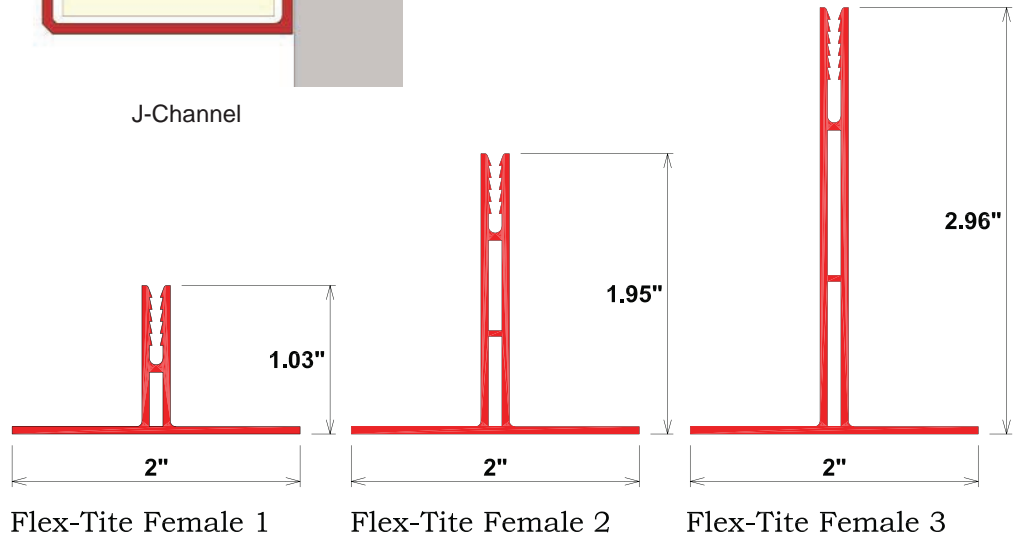
For Concrete Construction



J-Channel

### Installation

- **Step 1** – Align the Flex-Tite J-Channel horizontally at the desired height and check for level. Nail or staple into place.
- **Step 2** – Align the Flex-Tite female clip vertically at desired spacing and check for plumb. Nail or staple into place.
- **Step 3** – Install insulation and Flex-Tite male, then repeat.



**Flex-Tite & Insulation Board Sizing Chart**

Insulation Board Thickness	Corresponding Fukuvi Male #	Corresponding Fukuvi Female #
1.0"	FTM03	FTF1
1.25"	FTM06	FTF1
1.5"	FTM09	FTF1
1.55"	FTM10	FTF1
1.75"	FTM12	FTF1
2.0"	FTM05	FTF2
2.25"	FTM06	FTF2
2.5"	FTM10	FTF2
2.75"	FTM13	FTF2
3.0"	FTM05	FTF3
3.25"	FTM06	FTF3
3.5"	FTM10	FTF3
3.75"	FTM13	FTF3

All Flex-Tite Insulation Retainers are 10 ft./piece, 20 pieces/box.

**Fukuvi USA, Inc.**  
**Victory Bear Products**  
7631 Progress Court  
CenterPoint 70 Commerce Park  
Huber Heights, OH 45424

[www.fukuvi-usa.com](http://www.fukuvi-usa.com)  
[www.victorybear.com](http://www.victorybear.com)



**MADE IN USA**

**Customer Support**  
(937) 236-7288 ext. 247/231  
[aheskett@fukuvi-usa.com](mailto:aheskett@fukuvi-usa.com)  
[jdresel@fukuvi-usa.com](mailto:jdresel@fukuvi-usa.com)  
Fax: (937) 236-7289