

RainBarrier® 30 & 45 Installation Guide

Installation Instructions for:

- > Z-Furring/ Impasse® Hanger Attachment
- > Z-Furring/ Insulation Impaling Pin Attachment
- > Brick Tie/Masonry Anchor Installation
- > Installation within Channel-Type Framing
- > Impaling Pin Installation


Thermafiber®
THE NAME IN MINERAL WOOL®

RainBarrier® 30 & 45 Installation Guide

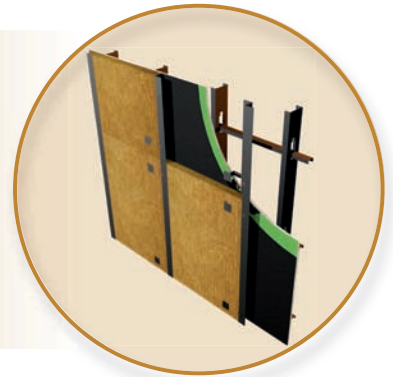
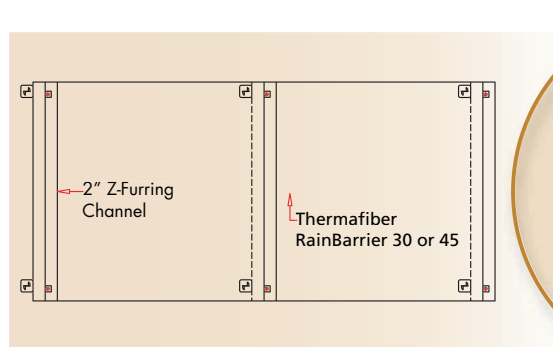
Z-Furring/Impasse Hanger Installation

2 Insulation Impasse Hangers/
Insulation Panel

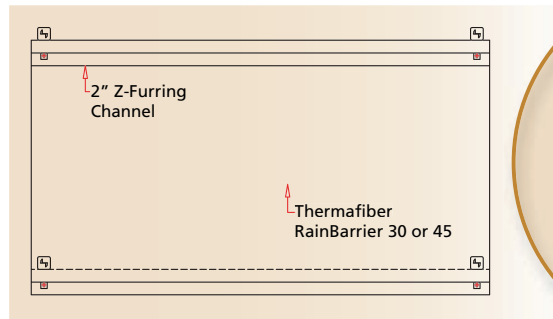
RainBarrier 30 or 45

Thickness	Width*	Length*
1" to 4"	16", 24" and 36"	48", 36" and 60"

*Custom sizes available



Impasse Hanger Installation with Vertical Z-Furring



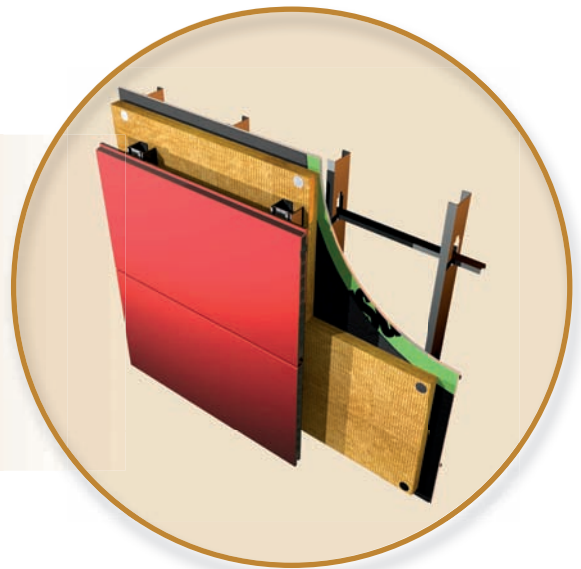
Impasse Hanger Installation with Horizontal Z-Furring

Channel Installation

+ Metal Cladding Applications

+ Open Face Architectural Panels

RainBarrier Insulation is installed between the exterior gypsum wallboard and façade channels creating a friction fit. Additional pins can be mechanically attached to secure the RainBarrier Insulation panel.





Brick Tie/Masonry Anchor Installation

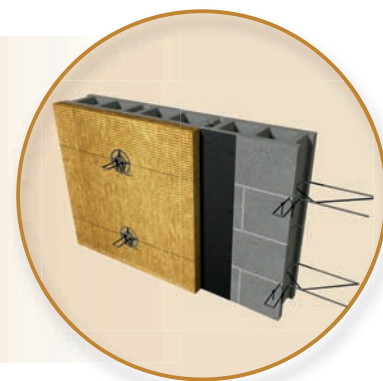
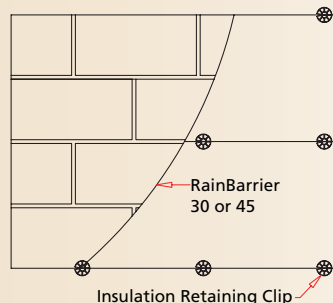
+ CMU/Brick Veneer Wall Tie Application

+ Steel Stud/ Brick Veneer Wall Tie Application

Attachment to typical wall ties –

RainBarrier Insulation can either be impaled onto shelf-type wall ties or installed so wall ties occur at insulation seams. Wall ties typically occur every 16" oc. Insulation is then secured to wall tie with plastic insulation retaining clip.

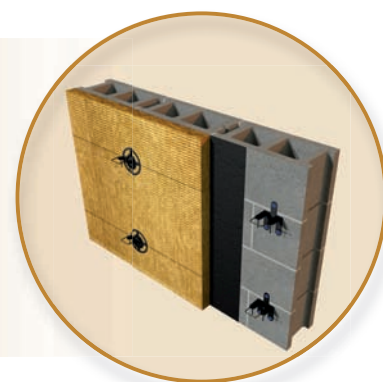
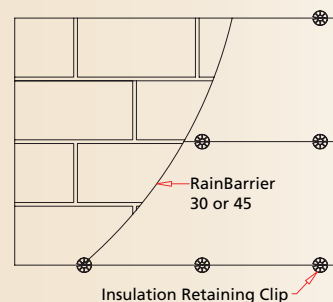
* Please note that for systems requiring fire performance characteristics, galvanized steel retaining clips are recommended.



Attachment to shelf-type wall ties –

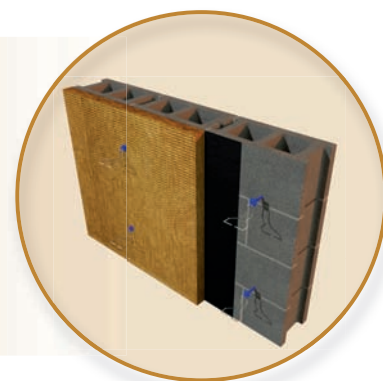
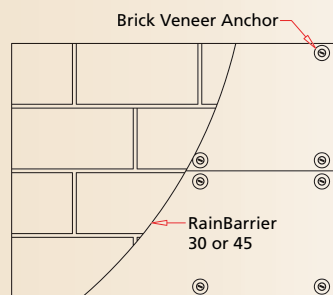
RainBarrier Insulation can either be impaled onto shelf-type wall ties or installed so wall ties occur at insulation seams. Wall ties typically occur every 16" oc. Insulation is then secured to wall tie with plastic insulation retaining clip.

* Please note that for systems requiring fire performance characteristics, galvanized steel retaining clips are recommended.



Attachment to Brick-Veneer anchor

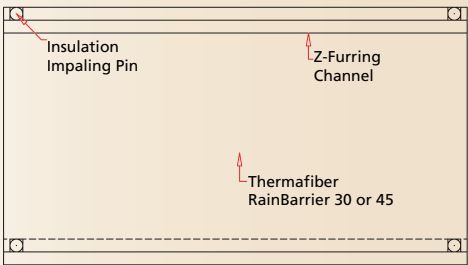
wall – RainBarrier Insulation to be attached to CMU wall with brick tie wall anchors. Insulation is secured to CMU wall by screwing the anchor screw with minimum 1 1/2" diameter head to the CMU anchor. Screws are typically spaced every 16" oc.



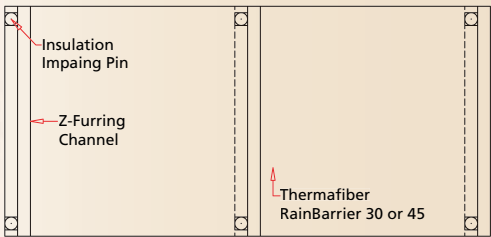
Z-Furring/Impaling Pin Installation – 2 Pins/Insulation Panel

2 Impaling Pins/ Insulation Panel		
RainBarrier 30		
Thickness	Width	Length
1" to 4"	16"	48"
1" to 2"	24"	48"
1" & 2"	36"	48"

2 Impaling Pins/Insulation Panel		
RainBarrier 45		
Thickness	Width	Length
1" to 3"	16"	48"
1" to 2"	24"	48"
1"	36"	48" or 60"



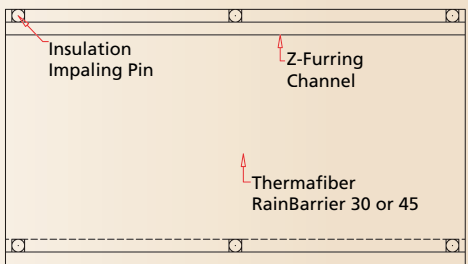
Impaling Pin Installation with Horizontal Z-Furring



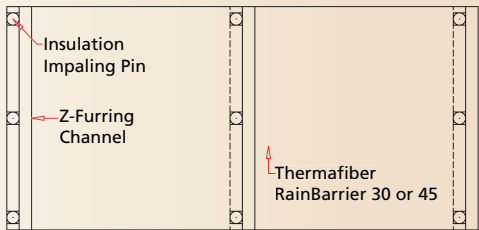
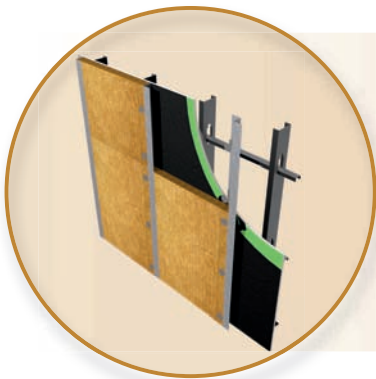
Impaling Pin Installation with Vertical Z-Furring

Z-Furring/Impaling Pin Installation– 3 Pins/ Insulation Panel

3 Impaling Pins/ Insulation Panel		
RainBarrier 30		
Thickness	Width	Length
3" to 4"	24"	48"
1" to 4"	36"	48"
1" to 4"	36"	60"

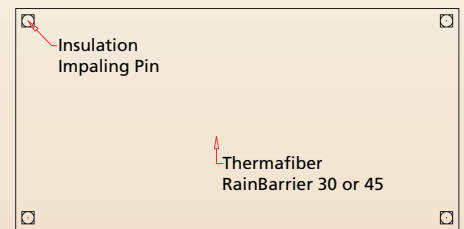


3 Impaling Pins/ Insulation Panel		
RainBarrier 45		
Thickness	Width	Length
3-1/2" to 4"	16"	48"
3" to 4"	24"	48"
1-1/2" to 4"	36"	48"
1-1/2" to 4"	36"	60"

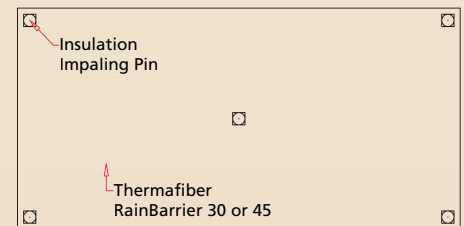


Standard Impaling Pin Installation

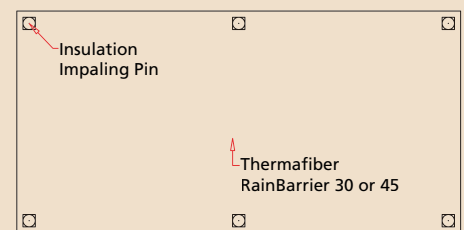
4 Impaling Pins/ Insulation Panel					
RainBarrier 30			RainBarrier 45		
Thickness	Width	Length	Thickness	Width	Length
1" to 4"	16"	48"	1" to 4"	16"	48"
1" to 3"	24"	48"	1" to 3"	24"	48"



5 Impaling Pins/ Insulation Panel					
RainBarrier 30			RainBarrier 45		
Thickness	Width	Length	Thickness	Width	Length
4"	24"	48"	4"	24"	48"
1" to 1-1/2"	36"	48"			



6 Impaling Pins/ Insulation Panel					
RainBarrier 30			RainBarrier 45		
Thickness	Width	Length	Thickness	Width	Length
2"	36"	48"	1" to 4"	36"	48"
1" to 4"	36"	60"	1" to 4"	36"	60"



Thermafiber Insolutions®

Thermafiber offers industry leading technical and engineering assistance to architects, specifiers, and contractors. These services include CAD drawings, engineering judgments, LEED® Credit Information, and product recommendations. All consultative services are free. We protect your building by customizing our five-step approach:



1. All-Phase Consultation



2. High-Performance Products



3. Cost-Saving Insulation Hanger Systems




4. Labor-Saving Customization and Packaging



5. The Greenest Commercial Insulation You Can Get

Good Design Principles

1. Mechanical Attachment– Mechanical fasteners should be inset 2” in from edge of insulation. Rainscreen and cavity wall systems vary greatly from types of hangers and how they are installed. Contact Thermafiber Technical Services for further installation recommendations not addressed in this installation guide.
2. Moisture Absorption– absorbs less than 0.03% by volume when tested per ASTM C 1104.
3. Vapor/Air Barrier – Vapor retarder, air barriers and moisture control are elements that are essential to the proper design and construction of buildings. The need for and proper placement of the vapor/air barrier and moisture control must be determined by a qualified professional engineer/architect knowledgeable of the climatic conditions both inside and outside, involved in the construction of each specific building. Penetrating the vapor/air barrier with mechanical insulation pins must be approved by the air/vapor barrier manufacturer.
4. Corrosion Resistance – RainBarrier 30 and 45 Insulation is non-corrosive per ASTM C 665.
5. R-value – RainBarrier 30 has an R-value of 3.8/inch. RainBarrier 45 has an R-value of 4.2/inch. R-value does not diminish over the life of the insulation.
6. UV Exposure – RainBarrier Insulation itself is UV resistant. Please note that packaging is not UV resistant and storing outside may cause packaging to deteriorate overtime.
7. Delivery and Storage of Materials – All materials delivered in their original packages and stored in an enclosed shelter providing protection from damage and exposure to the elements. Damaged or deteriorated materials shall be removed from the premises.
8. Cutting – Material cuts easily with a serrated knife.
9. PPE – Contact with mineral wool may cause temporary eye and skin irritation (mechanical). Wear eye protection and long-sleeved, loose fitting clothing closed at the neck and wrists while working with this product to avoid irritation. See Thermafiber Bonded MSDS for more information.

 Up to 90% Recycled Content	LEED® Green Building Credits			
	Energy & Atmosphere	Materials & Resources	Indoor Environmental Quality	Innovation in Design
	1	2.1, 2.2 3.1, 3.2 4.1, 4.2 5.1, 5.2	3.1, 3.2 9	1
Contributes to 33 LEED credits across 4 categories.				

