



**ANY JOB.
ANY SIZE.
ANY PLACE.**

55 Years of American Ingenuity

4000-G-A

Krendl's improved 4000-G-A design, now gives professional insulation contractors even more productivity on all types of insulation materials. Our low maintenance along with even more conditioning on hard to blow insulation materials, prevents bridging, while offering rugged performance. The **4000-G-A** is intended to function as a truck mount machine for the professional contractor, with an 18 hp Briggs & Stratton V-Twin engine. Capable of blowing all types and brands of loosefill insulation to the manufacturer's specifications.

- Adaptable fold down loading door
- Removable all steel airlock allows quick access for maintenance
- Durable powder coat finish
- Large hopper capacity for less reloading time & easy loading
- User friendly 12 VDC electric dashboard
- Control panel with engine controls, pressure gauge and air bleed off
- 4.75 gallon fuel tank w/emergency shut off
- Positive Displacement Blower

MATERIAL PRODUCTION RATE

	MATERIAL
CELLULOSE	4800 (2177) *
	160 Bags per hr.*
FIBERGLASS	2200 (998) *
	73 Bags per hr.*

* lbs/hr (kg/hr) rating with 150 ft. (45.8 m.) of 4" (10.16 cm.) hose at 16 ft. (4.8m.) elevation

NOTE:

Manufacturer's product brand, density and variable blowing conditions will affect production rate.

Backed by a manufacturer's **2-YEAR WARRANTY - Made in the U.S.A.**



KRENDL

The Innovator in Insulation Equipment™

Scan to learn more about Krendl Machine

4000-G-A

- **HOPPER CAPACITY** •

62 cu. ft. (1.75 m³)

Loading made easy with built in adaptable tray

- **QUAD AGITATORS** •

Designed for Constant Material Flow

- **WEIGHT/DIMENSIONS** •

1684 lbs / 43"W x 69"D x 83"H

764 kg. / 109cm x 175cm x 211cm

- **BLOWER/SIZE** •

Positive Displacement Blower

Blower System yields

150 CFM @ 5 PSI

- **Slideout Airlock System** •

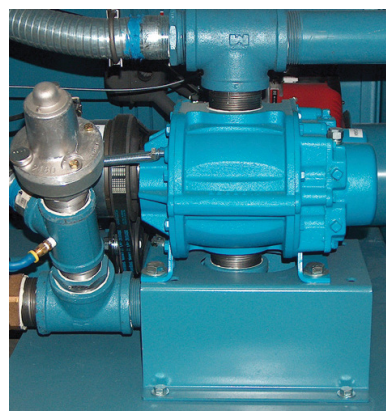
14" x 14" diameter

(35.5cm. x 35.5cm. diameter)

4" (10.16cm.) outlet

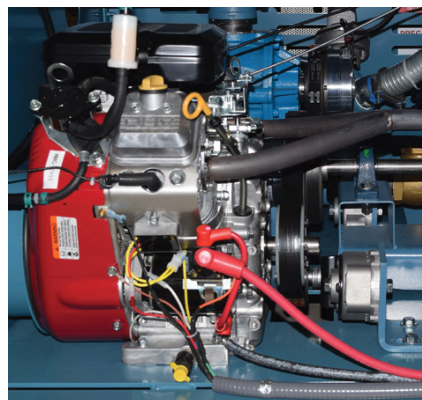
- **CONTROL PANEL** •

w/engine controls, pressure gauge and air bleed off



Positive Displacement Blower

W/150 CFM @ 5 psi



18 hp Briggs & Stratton V-Twin Engine

W/Positive Pressure Lubrication System