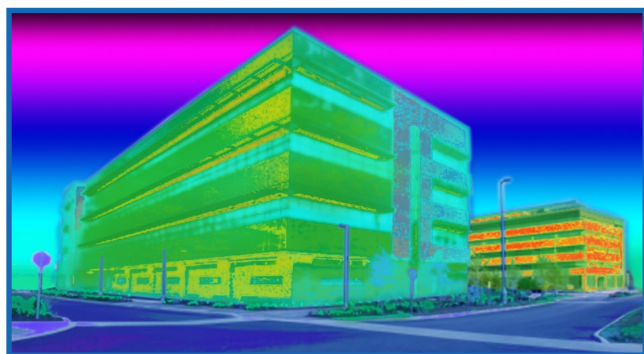


JM AP™ FOIL-FACED POLYISO FOAM SHEATHING



Johns Manville All Purpose (AP™) Foil-Faced Polyiso Foam Sheathing is the latest continuous insulation solution from Johns Manville. Polyiso foam sheathing offers many advantages over XPS and EPS sheathing. It's lightweight, easy to install, and provides better thermal efficiency, fire safety, and moisture and mold resistance.



Example thermal imaging of buildings with and without continuous insulation.

Why Continuous Insulation?

The 2012 International Building Codes for both commercial and residential buildings require continuous insulation, making it not only smart building science, but a requirement. Thermal bridging can drastically reduce the R-value of cavity insulation. That's why the International Building Codes now call for a layer of continuous insulation to be added to the exterior wall assembly – to prevent the thermal shorts that can drastically decrease the energy efficiency of the entire wall system.

2012 International Building Code

The 2012 codes require continuous insulation (ci) for all ASHRAE climate zones and wall types built with standard construction methods.

Wall Type	ASHRAE Climate Zones							
	1	2	3	4	5	6	7	8
Masonry	R-5.7ci	R-7.6ci	R-9.5ci	R-11.4ci	R-11.4ci	R-13.3ci	R-15.2ci	R-25ci
Metal Building	R-13 + R-6.5ci	R-13 + R-6.5ci	R-13 + R-6.5ci	R-13 + R-13ci	R-13 + R-13ci	R-13 + R-13ci	R-13 + R-13ci	R-13 + R-13ci
Metal Frame	R-13 + R-5ci	R-13 + R-5ci	R-13 + R-7.5ci	R-13 + R-7.5ci	R-13 + R-7.5ci	R-13 + R-7.5ci	R-13 + R-7.5ci	R-13 + R-7.5ci
2' x 4' Wood Frame 2' x 6' Wood Frame	R-13 + R-3.8ci or R-20	R-13 + R-3.8ci or R-20	R-13 + R-3.8ci or R-20	R-13 + R-3.8ci or R-20	R-13 + R-3.8ci or R-20	R-13 + R-7.5ci or R-20 + R3.8ci	R-13 + R-7.5ci or R-20 + R3.8ci	R-13 + R-15.6ci or R-20 + R10ci



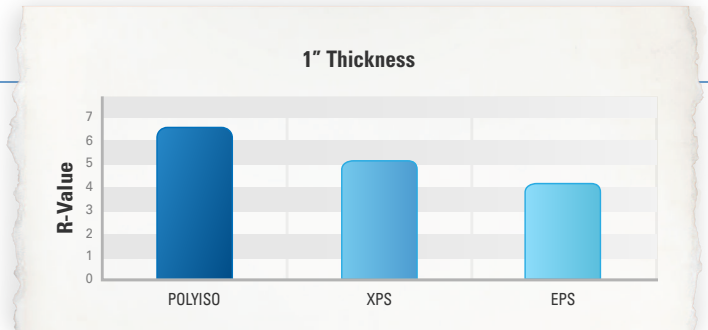
JM Worry-Free Solutions

You can count on JM to work with you to provide the best solution for your project. JM offers a complete line of high-performance commercial and residential insulation products (continuous insulation, spray foam, and fiber glass) – all designed and manufactured to work well in combination with one another, so that you can find the perfect solution at the price point that works for you.



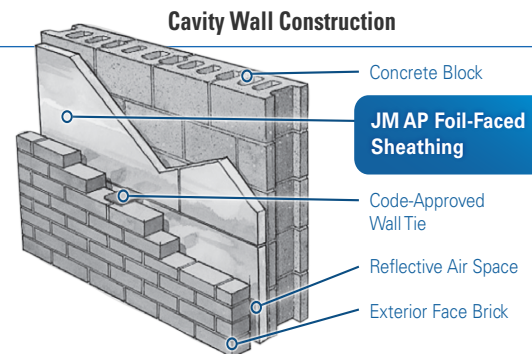
R-Value Per Inch

AP foam sheathing provides the highest thermal performance, requiring less space to achieve the same total R-value.



Approved Applications

- Commercial Buildings Types I-IV (E-84 and NFPA 285)
- Commercial Buildings Type V (E-84)
- Residential (E-84)
- Manufactured Housing (E-84)



Performance Advantages

Occupant Safety

- Superior fire performance

Space Efficiency

- High R-value per inch (R-6.5)
- Standard verifiable thicknesses
- Thinner profile than EPS/XPS

Ease of Installation

- Installation is simple, fast and safe
- Lightweight, easy to handle and cut
- No vapor or fumes, and little to no dust, when cut or attached
- Installs right alongside of other tradesmen
- Product can be scored for easy cutting

Environmental Responsibility

- Produced with a non-HCFC ozone depleting blowing agent

Performance

- Resists heat transfer with R-values up to R-25
- Dramatically increases overall thermal efficiency
- Prevents moisture intrusion and air infiltration when joints are taped or sealed
- Vapor impermeable (Class I vapor retarder)
- Resistant to solvents and chemicals
- Non-corrosive
- Won't deteriorate

Johns Manville

- Most complete line of superior insulation products
- Proven building product performance for over 150 years
- A financially sound Berkshire Hathaway company

How to Get Started

Visit SpecJM.com or call your JM sales representative.