

FORCE/2

High production, reliable, versatile and simple to use...



(Corded FORCE/2 shown above.)

High Production

No other insulation machine delivers the output like a FORCE/2. With production rates of 2010 lbs of cellulose per hour and 428 lbs of Fiber glass, it takes less than one hour to install R-30 in a 1000 square foot attic.

Reliable

The blower is completely isolated from the insulation material, minimizing down time and maintenance while delivering up to 4.0 PSI at 115CFM. The direct drive transmission means no more chains or belts to wear out, adjust, or replace.

“The Best Gets Better!”

Versatile

The FORCE/2 is up to your challenge. Open blow attics, dense pack sidewalls, or wall spray open cavities...this machine can do it all. Tipping the scales at only 283 pounds, its light weight provides portability to further enhance your profit opportunities.

Simple to Use

Designed to be operated in the back of any van, pickup truck, or trailer, the FORCE/2 allows for easy set-up, operation, and clean up. It takes few switches to operate; no complicated gauges, dials, or knobs...just turn it on! When you require high production, complete reliability, and ease of use, choose the FORCE/2.

GoWireless!

Using a FORCE/2 gets even better. Now you have a choice to use a corded remote or GoWireless. This new option allows for faster setup on the job, less cords to haul around, and greater operator freedom.



(Wireless FORCE/2 shown above.)

... these are a few reasons why you should own a FORCE/2.

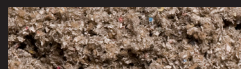
COMES STANDARD WITH

PRODUCTION



(Shown above with wireless option.)

- (2) 50' x 3" Blowing hose
- (1) 3" Steel hose connector
- (3) 3" Stainless steel hose clamps
- (2) 100' 10/3 Twist lock cords
- (1) 100' Remote cord with quick disconnect
- Blower variable speed control
- Stainless steel airlock inserts
- (1) Wireless remote (optional)
 - Hose / Remote holder
 - Belt clip
 - Lanyard



Cellulose Production
2010 lbs per hour



Fiber Glass Production
428 lbs per hour

**It takes less than one hour to install
R-30 in a 1000 square foot attic.**

Specifications



Wireless machine shown with transmitter.

Dimensions	36.25"D x 44.75"H
Weight (machine only)	283 lbs
Weight (shipping)	330 lbs
Production	2010 lbs/hr- Cellulose 428 lbs/hr- Fiber glass
Hose Outlet Size	3"
Remote Cord	18/4 x 100'
Wireless remote (range)**	250'
Hopper Capacity	9 cu. ft.
Drive motor	2 HP - 18.8 FLA.
Transmission	Custom, Direct drive
Airlock	12" Steel
Blower	3.0 2 stage, 11.5 amp, 105 cfm @ 3.0 psi 4.0 2 stage, 13.8 amp, 115 cfm @ 4.0 psi
Electrical*	115 VAC / 60 Hz
Power cord	(2) 10/3 x 100' Twist lock
Warranty	1 year limited; 90 days electric, airlock system and blower

* 230 VAC / 50 Hz available upon request

** Option only available on FORCE/2 wireless model

Electrical Options/Features

Standard



- Variable speed bypass switch
- Main control switches
- Blower variable speed control
- Remote cord quick disconnect
- Agitator circuit breaker
- Twist lock receptacles
- 100' Remote cord

Wireless



- Variable speed bypass switch
- Main control switches
- Blower variable speed control
- Remote cord quick disconnect
- Agitator circuit breaker
- Twist lock receptacles
- Remote selection switch (new)
- Blower fuse (new location)
- Hour meter (new)
- Wireless remote (new)
 - Hose / Remote holder
 - Belt clip
 - Lanyard

Blower/Agitator Options

Standard 3.0

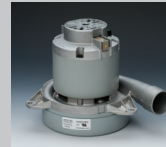


Standard



- 7.2" Diameter
- 105 CFM
- 3.0 psi
- 2 stage

Upgraded 4.0



Light Density



- 7.2" Diameter
- 115 CFM
- 4.0 psi
- 2 stage
- Easy access brushes
- Great for Dense Pack

- For those cellulose materials which are a bit harder to condition

Accessories



Pressure Gauge



Contractor Kit



150' Remote Cord



Wet Spray Nozzles



Hose Swivels 2-6" Available

Distributed By

The Intec Pledge

Provide the finest equipment in the industry while continuing to strive for 100% satisfaction.

Manufactured By



1-800-666-1611

P.O. Box 579
3771 Monarch Street
Frederick, CO 80530 USA

Local: 303-833-6644
Fax: 303-833-6650
www.intecorp.com