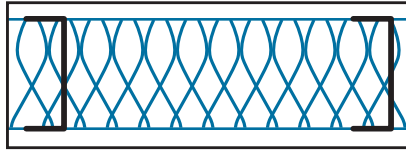


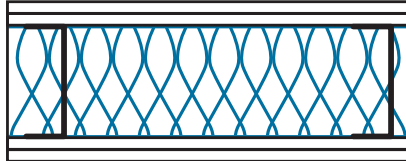


MinWool® Typical Sound Barrier Assemblies
SOUND AND FIRE CONTROL INSULATION



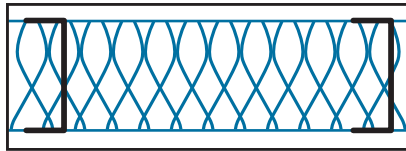
STC 46: Single layer of 1/2" (13 mm) gypsum drywall on each side of 2 1/2" (64 mm) steel stud with 2" (51 mm) MinWool SAFB

STC 48: Single layer of 5/8" (16 mm) gypsum drywall on each side of 2 1/2" (64 mm) steel stud with 2" (51 mm) MinWool SAFB



STC 53: Double layer of 1/2" (13 mm) gypsum drywall on each side of 2 1/2" (64 mm) steel stud with 2" (51 mm) MinWool SAFB

STC 58: Double layer of 5/8" (16 mm) gypsum drywall on each side of 2 1/2" (64 mm) steel stud with 2" (51 mm) MinWool SAFB

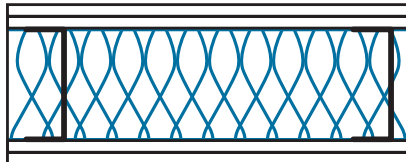


STC 48: Single layer of 1/2" (13 mm) gypsum drywall on each side of 3 5/8" (92 mm) steel stud with 2" (51 mm) MinWool SAFB

STC 51: Single layer of 1/2" (13 mm) gypsum drywall on each side of 3 5/8" (92 mm) steel stud with 3" (76 mm) MinWool SAFB

STC 49: Single layer of 5/8" (16 mm) gypsum drywall on each side of 3 5/8" (92 mm) steel stud with 2" (51 mm) MinWool SAFB

STC 51: Single layer of 5/8" (16 mm) gypsum drywall on each side of 3 5/8" (92 mm) steel stud with 3" (76 mm) MinWool SAFB



STC 56: Double layer of 1/2" (13 mm) gypsum drywall on each side of 3 5/8" (92 mm) steel stud with 2" (51 mm) MinWool SAFB

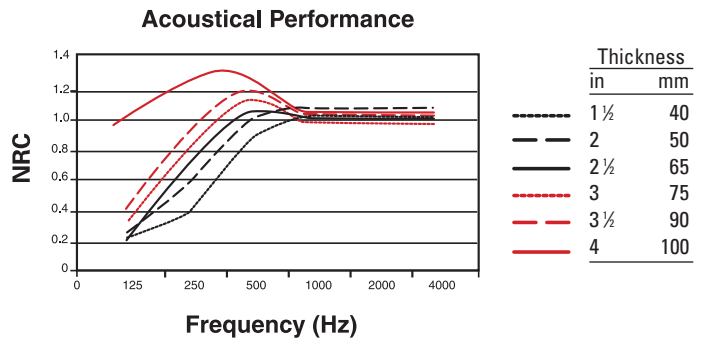
STC 57: Double layer of 1/2" (13 mm) gypsum drywall on each side of 3 5/8" (92 mm) steel stud with 3" (76 mm) MinWool SAFB

STC 58: Double layer of 5/8" (16 mm) gypsum drywall on each side of 3 5/8" (92 mm) steel stud with 2" (51 mm) MinWool SAFB

STC 59: Double layer of 5/8" (16 mm) gypsum drywall on each side of 3 5/8" (92 mm) steel stud with 3" (76 mm) MinWool SAFB

SAFB ACOUSTICAL PERFORMANCE

| Thickness | | Sound Absorption Coefficients | | | | | | |
|-----------|------|--|------|------|------|------|------|------|
| | | 1/3 Octave Band Center Frequencies, Hz | | | | | | |
| (in) | (mm) | 125 | 250 | 500 | 1000 | 2000 | 4000 | NRC |
| 1 1/2 | 40 | 0.23 | 0.42 | 0.89 | 1.03 | 1.03 | 1.03 | 0.85 |
| 2 | 50 | 0.27 | 0.55 | 1.07 | 1.10 | 1.10 | 1.10 | 0.95 |
| 2 1/2 | 65 | 0.25 | 0.77 | 1.10 | 1.04 | 0.98 | 0.98 | 1.00 |
| 3 | 75 | 0.34 | 0.92 | 1.16 | 1.04 | 0.98 | 0.98 | 1.05 |
| 3 1/2 | 90 | 0.41 | 1.01 | 1.20 | 1.06 | 1.06 | 1.05 | 1.10 |
| 4 | 100 | 0.97 | 1.28 | 1.25 | 1.10 | 1.10 | 1.09 | 1.20 |



MinWool® Typical Sound Barrier Assemblies

SOUND AND FIRE CONTROL INSULATION

| Curtainwall Acoustical Performances | | | | | | | | | |
|-------------------------------------|------|------|--|------|------|------|------|------|------|
| Sound Absorption Coefficients | | | | | | | | | |
| Thickness | | | 1/3 Octave Band Center Frequencies, Hz | | | | | | |
| Type | (in) | (mm) | 125 | 250 | 500 | 1000 | 2000 | 4000 | NRC |
| CW 4 | 1 ½ | 40 | 0.13 | 0.48 | 1.02 | 1.08 | 1.02 | 1.01 | 0.90 |
| | 2 | 50 | 0.20 | 0.61 | 1.07 | 1.06 | 1.04 | 1.07 | 0.95 |
| | 4 | 100 | 0.88 | 1.14 | 1.17 | 1.08 | 1.06 | 1.10 | 1.10 |
| CW 6 | 1 ½ | 40 | 0.18 | 0.62 | 1.08 | 1.08 | 1.03 | 1.07 | 0.95 |
| | 2 | 50 | 0.25 | 0.85 | 1.15 | 1.10 | 1.04 | 1.06 | 1.05 |
| | 3 | 75 | 0.80 | 1.07 | 1.11 | 0.99 | 0.98 | 0.96 | 1.05 |
| CW 8 | 1 ½ | 40 | 0.13 | 0.64 | 1.08 | 1.04 | 1.04 | 1.07 | 0.95 |
| | 2 | 50 | 0.32 | 0.90 | 1.11 | 1.01 | 1.01 | 1.05 | 1.00 |
| | 4 | 100 | 1.11 | 0.91 | 1.03 | 1.06 | 1.06 | 1.07 | 1.00 |

ADDITIONAL INFORMATION, MSDS AND LEED® CERTIFICATION
Please visit our website at www.iig-llc.com.

PRODUCT CERTIFICATION

When ordering material to comply with any government specification or any other listed specification, a statement of that fact must appear on the purchase order. Government regulations and other listed specifications require specific lot testing, and prohibit the certification of compliance after shipment has been made. There may be additional charges associated with specification compliance testing. Please refer to IIG-CSP-3 for Certification Procedures and Charges. Call customer service for more information.

QUALITY STATEMENT

IIG Products are designed, manufactured and tested to strict quality standards in our own facilities. This along with third party auditing is your assurance that this product delivers consistent high quality.



Industrial Insulation Group, LLC is a Johns Manville company. IIG manufactures MinWool mineral fiber pipe, block and a variety of other insulations; Thermo-12® Gold Calcium Silicate pipe and block insulation; Super Firetemp® fireproofing board; SprouleWR-1200® Perlite pipe and block insulation; high temperature adhesives, and insulating finishing cement.

The physical and chemical properties presented herein represent typical, average values obtained in accordance with accepted test methods and are subject to normal manufacturing variations. They are supplied as a technical service and are subject to change without notice. Numerical flame spread and smoke developed ratings are not intended to reflect hazards presented by these or any other materials under actual fire conditions. Check with the Customer Service Office to assure current information. All Industrial Insulation Group products are sold subject to the IIG Limited Warranty and Limitation of Remedy. For a copy of the IIG Limited Warranty and Limitation of Remedy, email - info@iig-llc.com.

The **GREENGUARD INDOOR AIR QUALITY CERTIFIED®** Mark is a registered certification mark used under license through the GREENGUARD Environmental Institute.



Industrial Insulation Group, LLC

A Johns Manville Company

2100 LINE STREET • BRUNSWICK, GA 31520

**CUSTOMER SERVICE,
TECHNICAL & GENERAL INFORMATION**

(800) 866-3234

www.iig-llc.com