



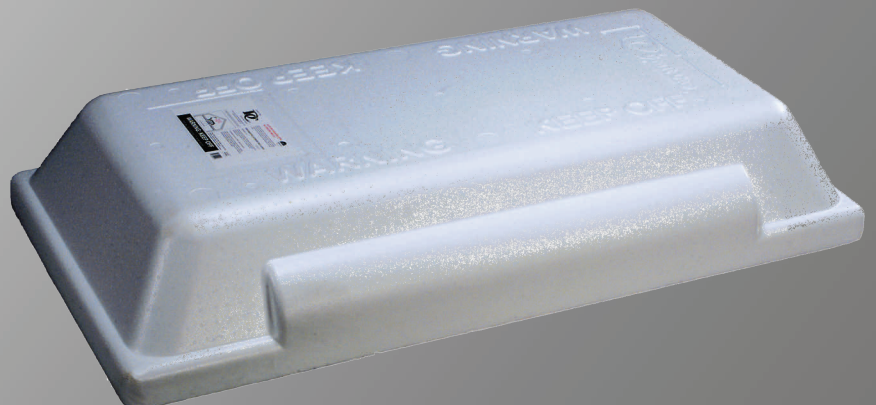
The attic stair insulator



THE SIMPLE SOLUTION TO INSULATION BUILDING CODES

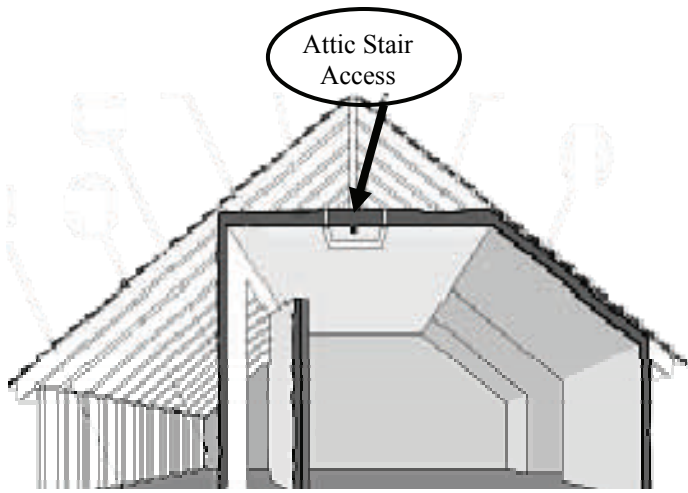
BENEFITS of DRAFT CAP

- Satisfies current energy building codes for insulation over attic access panel. Note—the International Residential Code (IRC) for energy has been adopted by all but 3 states.
- No assembly required – simply place over stairwell opening.
- Made of durable, dust-free expanded polystyrene (EPS) foam.
- Lightweight – can easily be carried by one individual.
- R-value of 11
- The Draft Cap material has met the UL-94HF-1 rating for flammability.
- Draft Cap saves money by reducing the heat loss in the winter and the heat gain in the summer that occurs through the attic stair opening.



Atticap Corporation

P.O. Box 2156, Acton, MA 01720-6156 • 888-292-2229 • www.draftcap.com



The Department of Energy describes the attic access as a “big hole” representing one of the biggest deficiencies in thermal barrier between the attic and living areas. As a result, the national building energy code has adopted guidelines for insulating the opening. Until now, no easy method has existed for contractors to comply. Draft Cap offers a simple solution, with a product that sits over the opening. With an r-value of 11, Draft Cap offers a quick way to satisfy building codes, reduce heat loss in the winter and heat gain in the summer, and increase overall structure insulation.



Draft Cap is lightweight, and easily installed in minutes. Made of durable dust-free expanded polystyrene foam, Draft Cap covers the attic stair opening to prevent air flow, and meets all local and federal energy codes for insulation.

DRAFT CAP SPECIFICATIONS

- Fits standard 25-1/2” x 54” R.O. opening
- Can be used in 2 x 6, 2 x 8, 2 x 10 and 2 x 12 floor construction.
- Outside dimensions of unit approximately 31” x 59-1/2” x 10-1/2”
- Total underside clearance is 7-7/8”.
- Weight of unit approx. 7 pounds. Wall thickness: 2-3/4”
- Material meets the UL-94HF-1 rating for flammability. Contains a fire retardant (in the event of a fire, polystyrene will not contribute in the spreading of a flame; also does not emit toxic fumes when ignited).
- Units ship 7 to a bundle; 420 units per truckload. Bundle dimensions: 62” x 32” x 53”
- Patented; No. 6,966,153
- Made in the U.S.A.



Atticap Corporation

P.O. Box 2156, Acton, MA 01720-6156 • 888-292-2229 • www.draftcap.com