

# PULLDOWN LADDER JACKET

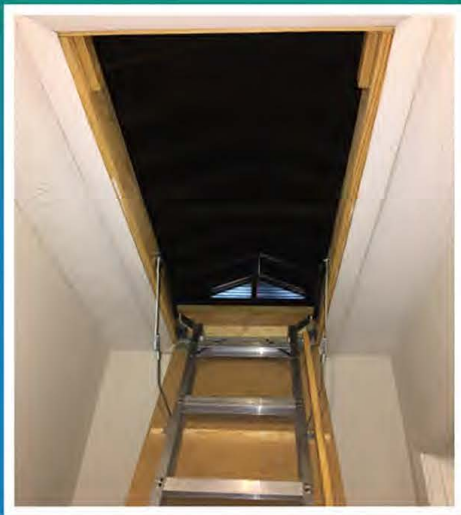


- *Reflects 97% of Radiant Heat*
- *Insulates & Air Seals Attic Access*

- *Quick Installation*
- *Easy Zipper Access to Attic*



*Meets and Exceeds Code Requirements for All Climate Zones*



*Don't Let  
Your Hard  
Earned Money  
Slip Through  
The Cracks!*



**EASY TO INSTALL WITH A THERMAL VALUE UP TO R-58**

*Please Refer to Back for R-Value Chart*

**SOUTHEAST  
ENERGY  
SOLUTIONS**



**LISTED  
PRODUCT**



**US PATENT #9,695,630**

*See Reverse Side of Label for Installation Instructions  
or visit our website at [www.southeastenergy.solutions](http://www.southeastenergy.solutions)*

**MADE IN THE USA**



# Pulldown, Ladder Jacket

## Economical Solution for Immediate Energy Savings!

### BENEFITS OF PULLDOWN LADDER JACKET:

- Increase Energy Savings
- Non-toxic
- Excellent vapor barrier
- Helps to provide a consistent R-value across attic floor
- Superior thermal performance
- Flexible and durable
- Improves insulation system performance
- Great for new construction or retrofits
- Reflects up to 97% of radiant heat
- Simple installation and heavy duty zipper allows for easy attic access.
- Insert insulation batt into pocket and close the Velcro tab
- Excellent air sealing to keep out harmful attic pollutants
- **Insulation insertion and Installation video clips are on the website**



**PRODUCT DIMENSIONS & DESCRIPTIONS:** Double sided scrimmed aluminum foil laminated to polyethylene foam (1/4" nominal thickness)

**CORE MATERIAL:** Polyethylene

**FACINGS AVAILABLE:** Foil/Foil

**FLAME AND SMOKE:** ASTM E-84

**FLAME SPREAD:** Less than 25, **SMOKE DEVELOPED:** Less than 50

**FULL SCALE FIRE TEST:** NFPA 286 - Foil/Foil Passed

**R-VALUE:** Up to R-9 with current application\*

**PERM RATING:** E-96 - .008

**WARNING:** Although Insulation Products are all fire tested to ASTM and/or NFPA standards; it is recommended that they or any insulation material should not be exposed to open flame or other ignition sources of sufficient intensity during shipment, storage or installation.

Southeast Energy Solutions, Inc.

[www.southeastenergy.solutions](http://www.southeastenergy.solutions)

Email: [info@southeastenergy.solutions](mailto:info@southeastenergy.solutions)

**ASTM C518 - Testing**

Provided By:

R & D Services

P.O. Box 2400

Cookeville, TN 38502-2400

**ASTM E-283 Air Leakage:**

Results (1.44 cfm/ft2)

Reference 2015 IECC/IRC,

Section R402.4.5/N114)2.4.5

**E-283 Testing provided by:**

Intertek Architectural

Testing

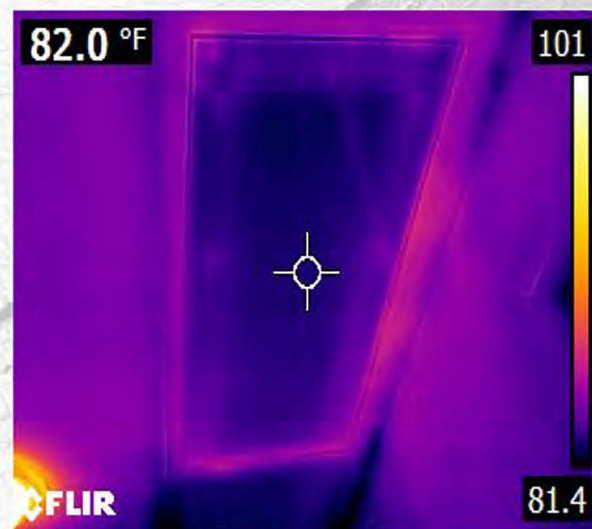
130 Derry Court

York, PA 17406

#### Overall R-Value for the Insulation Assembly with low-Emittance Surfaces

| Insulation | Heat Flow Down (summer) | Heat Flow-Up (winter) |
|------------|-------------------------|-----------------------|
| 13         | 22.1 (18.5)             | 15.6 (14.9)           |
| 19         | 28.1 (24.5)             | 21.6 (20.9)           |
| 21         | 30.1 (26.5)             | 23.6 (22.9)           |
| 30         | 39.1 (35.5)             | 32.6 (31.9)           |
| 38         | 47.1 (43.5)             | 40.6 (39.9)           |
| 49         | 58.1 (54.5)             | 51.6 (50.9)           |

\*Numbers in parantheses are for upper surface covered with dust, fibers, or other particulate material. The upper surface can be cleaned.



- \* Can custom make to any size.
- \* We have Scuttle hole/Attic hatch covers
- \* Full size knee-wall access door sizes are available

CFLIR

81.4