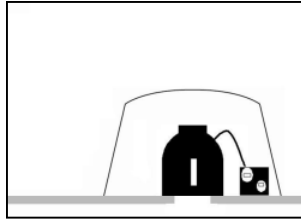


### MODEL FF130E RECESSED LIGHT COVER

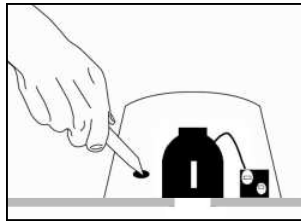
#### Step 1

Place TENMAT FF130E cover over the fixture. For optimal performance make sure that the flange of the cover is in contact with the drywall.



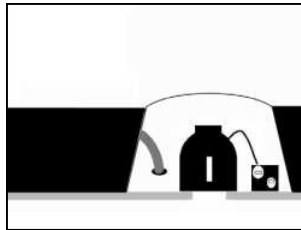
#### Step 2

If necessary, slit the cover to fit over the hanger bars and the wiring of the fixture.



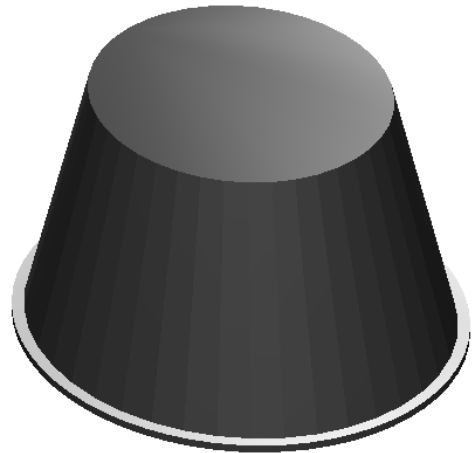
#### Step 3

The TENMAT FF 130E Recessed Light Cover is compatible with all kind of insulation, including sprayed foam, mineral wool, fiber glass and blown-in cellulose.



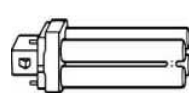
Model Number	Outside Height	Outside Length	Outside Width
FF130E	9"	16"	14 1/2"

### FF130E RECESSED LIGHT COVER



### MAXIMUM LAMP WATTAGE AND TYPE

USE WITH LAMP TYPES AND WATTAGE AS RECOMMENDED BY THE LIGHT MANUFACTURER OR TENMAT, WHICHEVER IS LOWER, IN ORDER TO AVOID THERMAL OVERLOAD.



Compact Fluorescent Lamps 120V

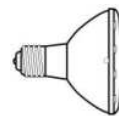
**13W**

**18W**

**26W**

**32W**

**42W**



Directional Lamps

**65W, BR 30**

**90W PAR38**



Do not use with energy inefficient incandescent light bulbs!



**WARNING** - USE WITH LAMP TYPES & WATTAGES AS INDICATED ABOVE.

FOLLOW THE LIGHT MANUFACTURER'S RECOMMENDATIONS FOR INSTALLATION WITHIN ENCLOSED SPACES.

NOTICE - FOR USE WITH THERMALLY PROTECTED FIXTURE ONLY. BLINKING LIGHT MAY INDICATE IMPROPER LAMP SIZE.

### Manufactured By

**Tenmat Ltd**

23 Copper Drive

Newport, DE 19804

Phone: (302) 633-6600

Fax: (302) 633-6838

Email: [info@tenmatusa.com](mailto:info@tenmatusa.com)

[www.recessedlightcover.com](http://www.recessedlightcover.com)

**NOTE: FOR APPLICATIONS IN FIRE RATED CEILINGS (1 & 2 HR) USE TENMAT FF109 COVERS.**

**WARNING: BE SURE THE ELECTRICITY TO THE SYSTEM YOU ARE WORKING ON IS TURNED OFF; EITHER THE FUSE REMOVED OR THE CIRCUIT BREAKER SET AT OFF.**